

USING THE GENOME BROWSER (GBrowse)

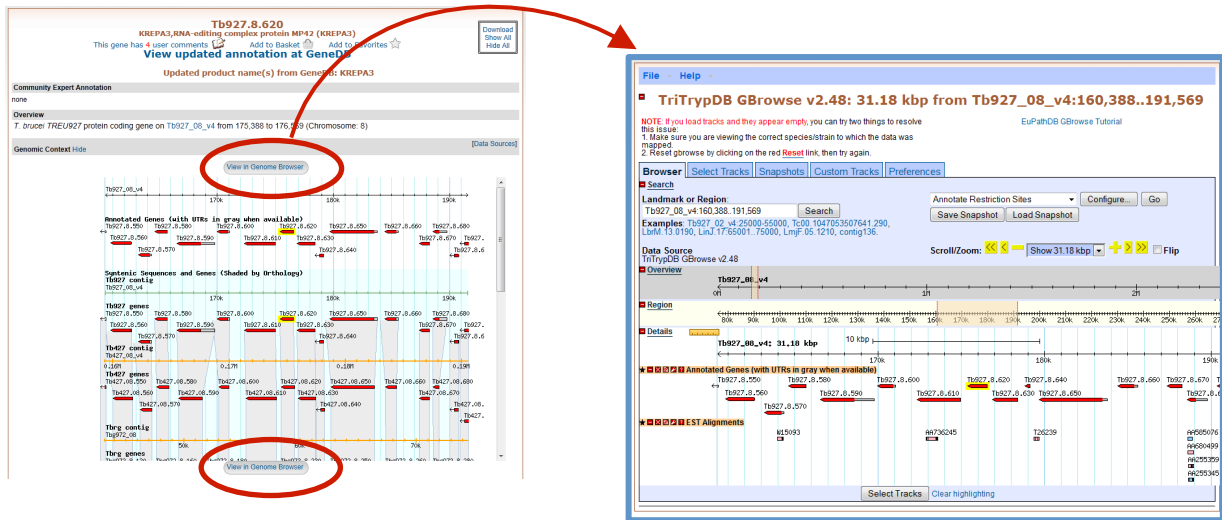
Exercise 2

2.1 Navigating to the genome browser (GBrowse)

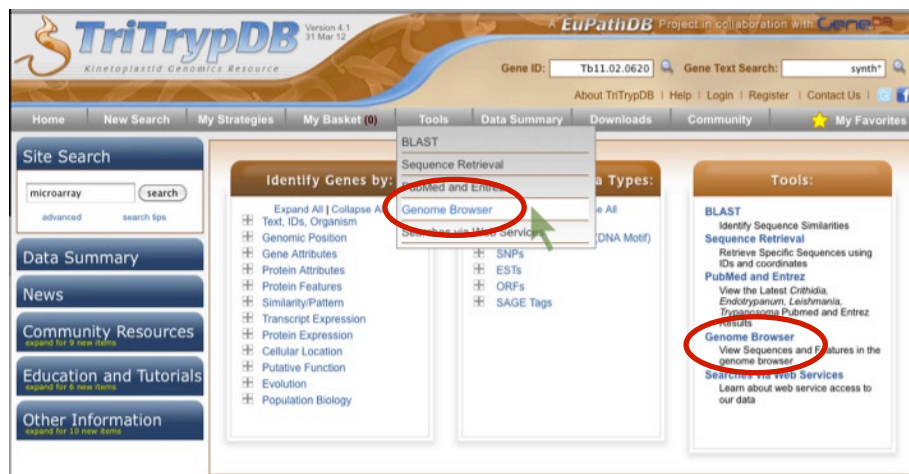
Note: For this exercise use <http://www.tritrypdb.org>

a. There are two ways to navigate to GBrowse from TriTrypDB.

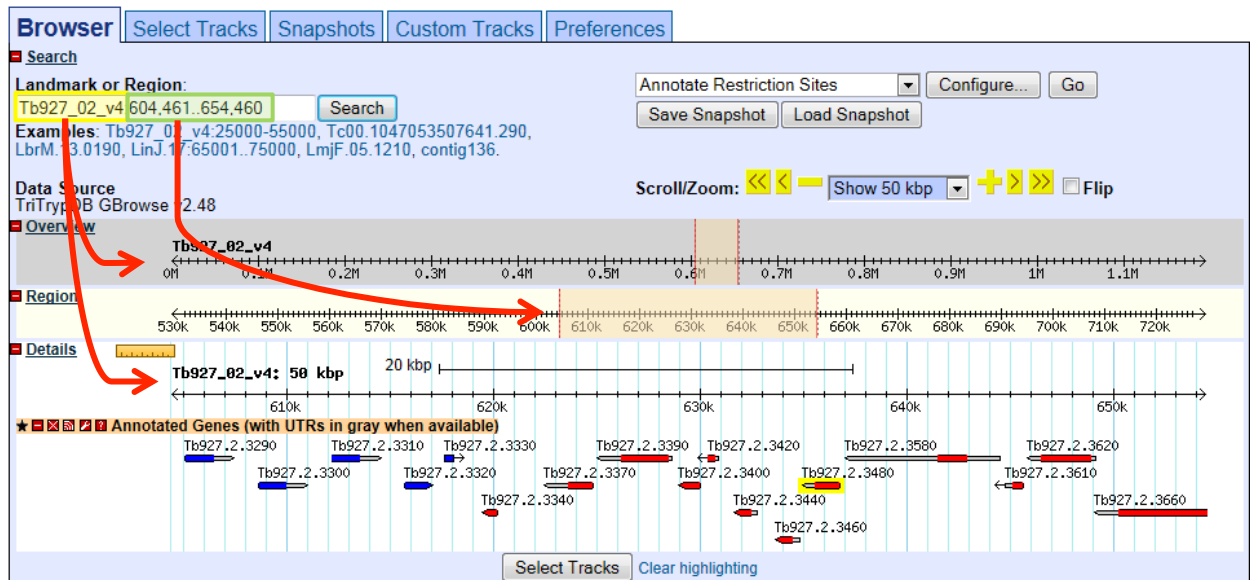
From record pages, like a gene page, genomic sequence or EST page, click on the "View in Genome Browser" link.



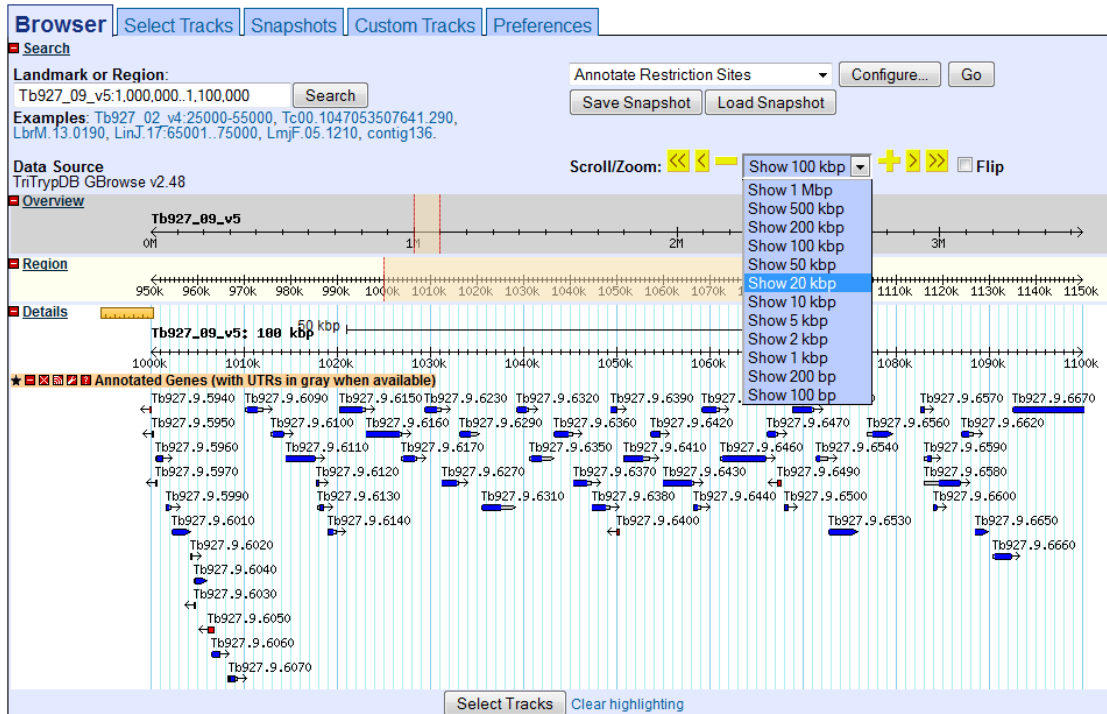
You can also use the Tools section on the home page or the grey tool bar in the header section.



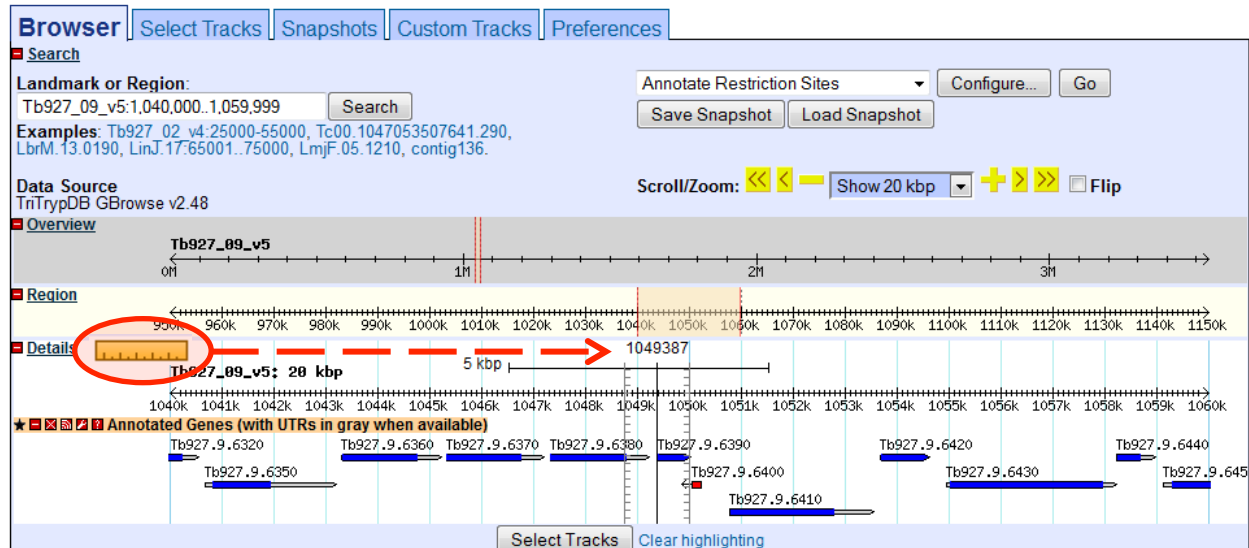
- b. Go to GBrowse from the TriTrypDB home page. Explore this page – take note of the different sections: Instructions, Search, Overview, Region, Details, Tracks, etc...
- c. Look at the “Landmark or Region” box.



- What information does the “Landmark or Region” box contain?
- What chromosome is displayed?
- What location of the chromosome is displayed?
- Move to a different genomic region on this chromosome – for example, visit the right arm of this chromosome.
 - § Hint: change the coordinate numbers in the “landmark or region” box to correspond to an area in that region. Look at the overview to give you an indication of the total size of this chromosome, ie. 1000000..1100000).
- Move to chromosome 9, which has just been updated to version 5. How did you do this?
 - § Hint: Change the chromosome number in the “landmark or region” box – it should look like this: Tb927_09_v5:1000000..1100000).
- Zoom in to a 20Kb region. Select 20Kb from the Scroll/zoom drop down menu.



- What genes are in this region? Mouse over the gene graphics and look at the popups.
- Explore the ruler tool. Click on the ruler to engage then drag it across the window:



- Are there other ways to move and zoom? Try highlighting an area along the scale in the overview, region or details sections of GBrowse.

Browser | Select Tracks | Snapshots | Custom Tracks | Preferences

Search

Landmark or Region: Tb927_09_v5:1080000..1125999 Search

Examples: Tb927_02_v4:25000-55000, Tc00.1047053507641.290, LbrM.13.0190, LinJ.17:65001..75000, LmjF.05.1210, contig136.

Data Source: TriTrypDB GBrowse v2.48

Annotate Restriction Sites [v] Configure... Go

Save Snapshot Load Snapshot

Scroll/Zoom: [Left Arrow] [Right Arrow] Show 20 kbp [Zoom In] [Zoom Out] Flip

Overview

Tb927_09_v5 430 kbp

Region

950k 960k 970k 980k 990k 1000k 1010k 1020k 1030k 1040k 1050k 1060k 1070k 1080k 1090k 1100k 1110k 1120k 1130k 1140k 1150k

Details

Tb927_09_v5: 20 kbp 5 kbp

1040k 1041k 1042k 1043k 1044k 1045k 1046k 1047k 1048k 1049k 1050k 1051k

Annotated Genes (with UTRs in gray when available)

Tb927.9.6320 Tb927.9.6360 Tb927.9.6370 Tb927.9.6380 Tb927.9.6390 Tb927.9.6400 Tb927.9.6440 Tb927.9.6450

Select Tracks Clear highlighting

Context Menu:

- Zoom in
- Recenter on this region
- Dump selection as FASTA
- Submit selection to UCSC BLAT
- Submit selection to NCBI BLAST

- d. What if you want to go to a specific gene in Gbrowse? Try to figure out how to go to this gene: Tb927.2.5800
- § Hint: type the ID in the “landmark or region” box.
 - § Then choose the second option for regions matching the gene.
 - § Scroll out to 5 kbp
- What is this gene?

Browser | Select Tracks | Snapshots | Custom Tracks | Preferences

Search

Landmark or Region: tb927.2.5800 Search

Examples: Tb927_02_v4:25000-55000, Tc00.1047053507641.290, LbrM.13.0190, LinJ.17:65001..75000, LmjF.05.1210, contig136.

Data Source: TriTrypDB GBrowse v2.48

Annotate Restriction Sites [v] Configure... Go

Save Snapshot Load Snapshot

Scroll/Zoom: [Left Arrow] [Right Arrow] Show 1.599 kbp [Zoom In] [Zoom Out] Flip

The following 3 regions match your request.

Tb927_02_v4

Name	Type	Description	Position	Match Score
Tb927.2.5800	gene:annotation		Tb927_02_v4:1046214..1046356	n/a
Tb927.2.5800	gene:annotation		Tb927_02_v4:1046214..1047812	n/a
Tb927.2.5800	gene:annotation		Tb927_02_v4:1047356..1047812	n/a

Select Tracks

2.2 Exploring data tracks in GBrowse

- a. Is the region containing the sedoheptulose-1,7-bisphosphatase (SBPase) gene syntenic in all kinetoplastids?

Hint: Go to the “Select Tracks” section and turn on the track called “Syntenic Sequences and Genes”. The browser is automatically updated with tracks you select. Note that this track contains multiple subtracks.

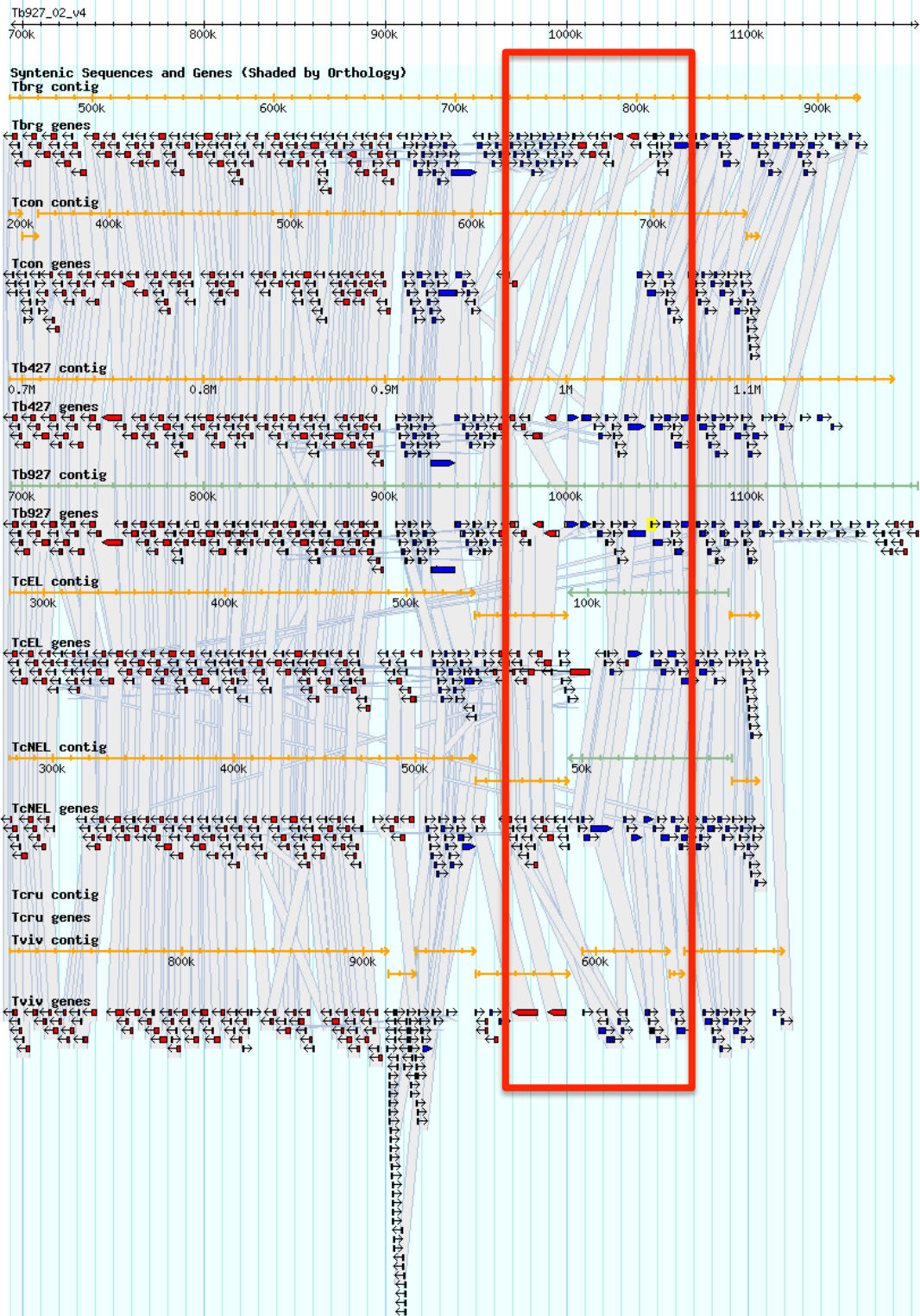
- Return to the browser by clicking the “Browser” tab. – zoom out to 20Kb. What does this region look like? What genes are upstream and downstream of the SBPase?
- Modify the subtracks to remove *Leishmania* species from the view. (click on the link ‘showing 32 of 32 subtracks’ and uncheck all *Leishmania* species then click on change.

Syntenic Sequences and Genes (Shaded by Orthology) Subtracks

Select	Organism	Type
All off	All	All
<input checked="" type="checkbox"/>	<i>Leishmania braziliensis</i> MHOM/BR/75/M2904	contig
<input checked="" type="checkbox"/>	<i>Leishmania braziliensis</i> MHOM/BR/75/M2904	genes
<input checked="" type="checkbox"/>	<i>Leishmania donovani</i> BPK282A	contig
<input checked="" type="checkbox"/>	<i>Leishmania donovani</i> BPK282A	genes
<input checked="" type="checkbox"/>	<i>Leishmania infantum</i> JPCM5	contig
<input checked="" type="checkbox"/>	<i>Leishmania infantum</i> JPCM5	genes
<input checked="" type="checkbox"/>	<i>Leishmania major</i> strain Friedlin	contig
<input checked="" type="checkbox"/>	<i>Leishmania major</i> strain Friedlin	genes
<input checked="" type="checkbox"/>	<i>Leishmania mexicana</i> MHOM/GT/2001/U1103	contig
<input checked="" type="checkbox"/>	<i>Leishmania mexicana</i> MHOM/GT/2001/U1103	genes
<input checked="" type="checkbox"/>	<i>Leishmania tarentolae</i> Parrot-Tarll	contig
<input checked="" type="checkbox"/>	<i>Leishmania tarentolae</i> Parrot-Tarll	genes
<input checked="" type="checkbox"/>	<i>Trypanosoma brucei</i> gambiense DAL972	contig
<input checked="" type="checkbox"/>	<i>Trypanosoma brucei</i> gambiense DAL972	genes
<input checked="" type="checkbox"/>	<i>Trypanosoma brucei</i> Lister strain 427	contig
<input checked="" type="checkbox"/>	<i>Trypanosoma brucei</i> Lister strain 427	genes
<input checked="" type="checkbox"/>	<i>Trypanosoma brucei</i> TREU927	contig
<input checked="" type="checkbox"/>	<i>Trypanosoma brucei</i> TREU927	genes
<input checked="" type="checkbox"/>	<i>Trypanosoma congolense</i> IL3000	contig
<input checked="" type="checkbox"/>	<i>Trypanosoma congolense</i> IL3000	genes
<input checked="" type="checkbox"/>	<i>Trypanosoma cruzi</i> CL Brener Esmeraldo-like	contig
<input checked="" type="checkbox"/>	<i>Trypanosoma cruzi</i> CL Brener Esmeraldo-like	genes

Uncheck the Leishmania tracks to turn them off

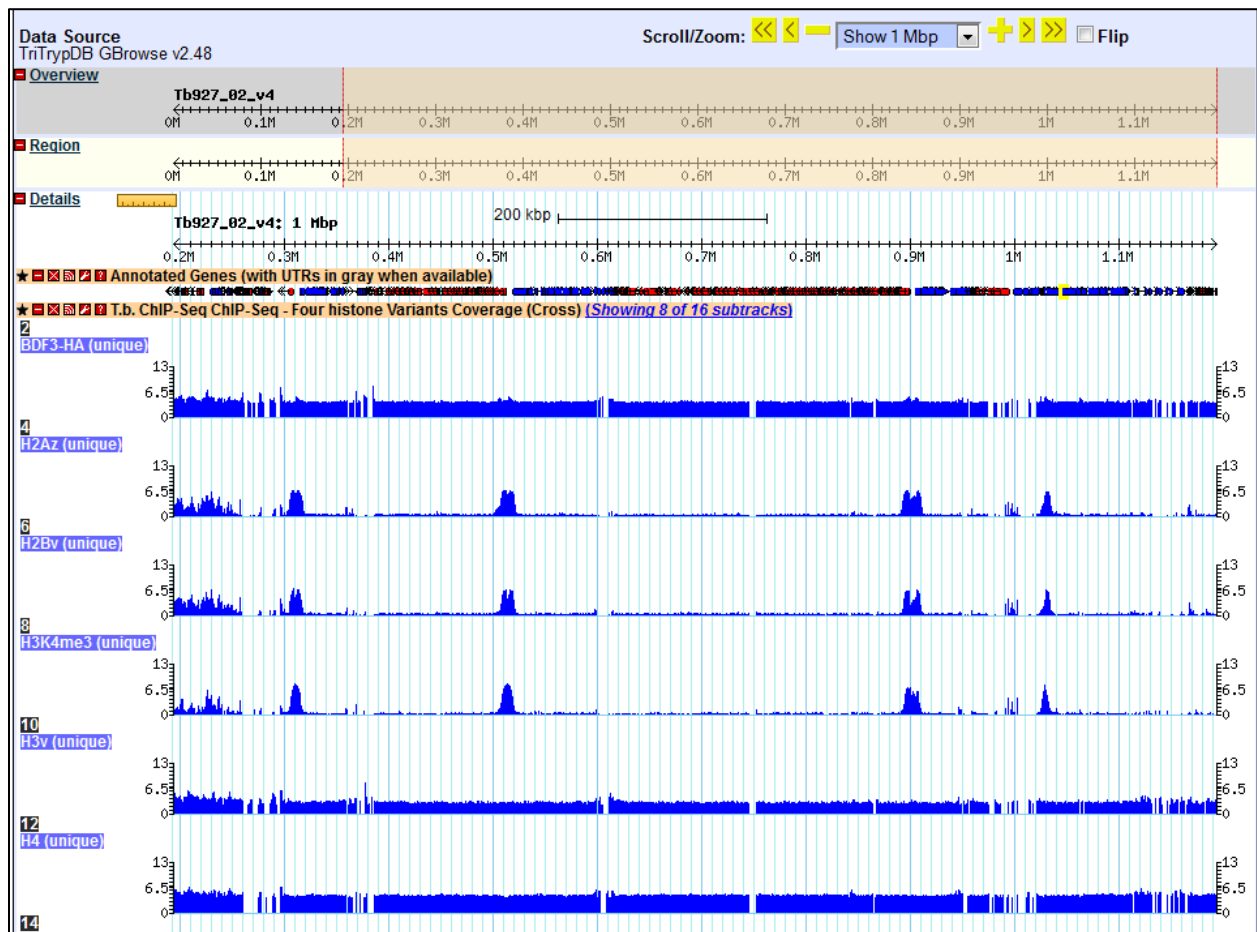
- Examine the gene corresponding to the *T. vivax* SBPase. What is it called? Why is it a fragment? What could be some possible reasons for this?
- Zoom out to 50KB. Look at the genomic sequence for *T. congolense* – why does the synteny look like it does? Zoom out to 500KB – what could you conclude about this region in *T. congolense*? (See image on next page if needed).
- You will also notice that some of the genomes have contigs that are not contiguous. Why is that?
- Mouse over the two regions and look at the information in the popups – do these pieces belong to the same chromosome? What does this mean?



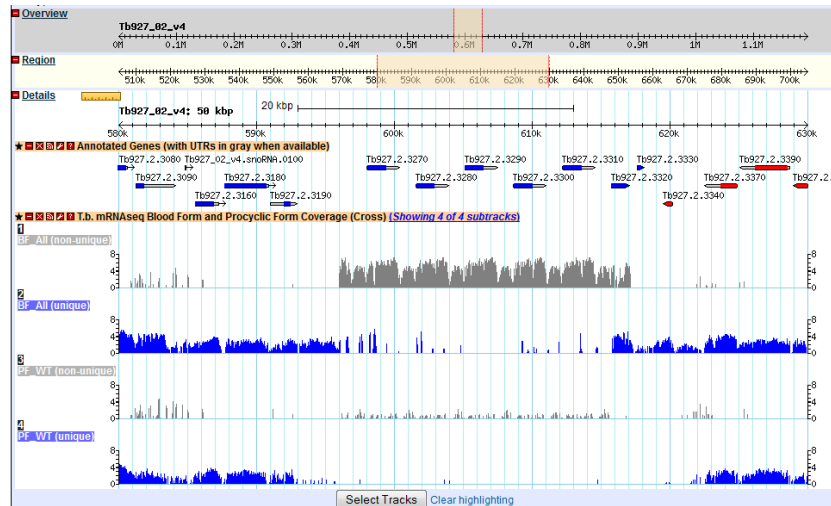
b. Exploring other data tracks in Gbrowse.

Hint: in this case you are looking at *T. brucei*, so the data tracks you turn on will display data only if they are *T. brucei* datasets. For example, turn on the ChIP-seq coverage plots and turn off the syntenic gene and region tracks.

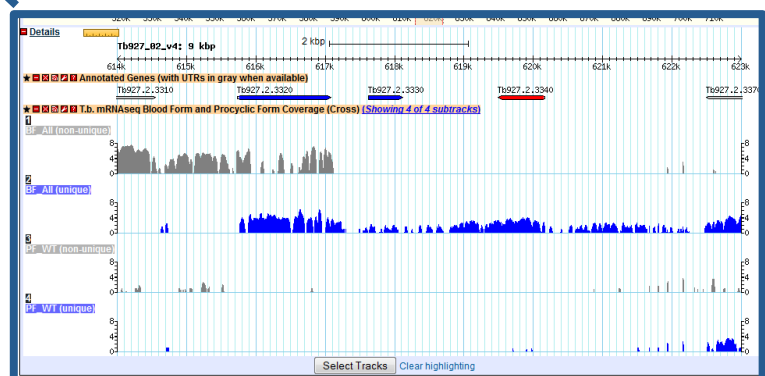
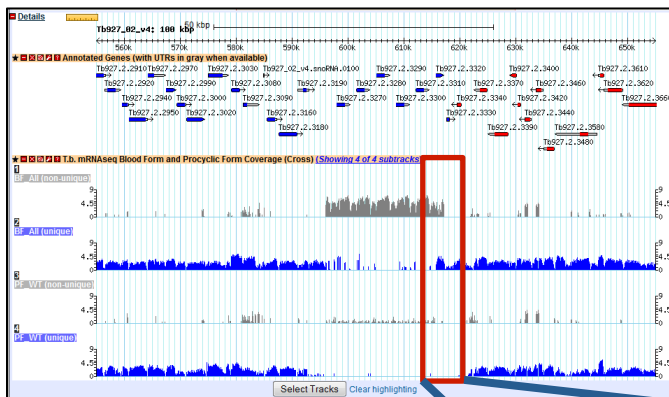
- What does this data show you?
- Roughly how many polycistronic units does this chromosome have? Zoom out to the entire chromosome.
- Do the ChIP-seq peaks correlate with gene direction (blue vs. red)?



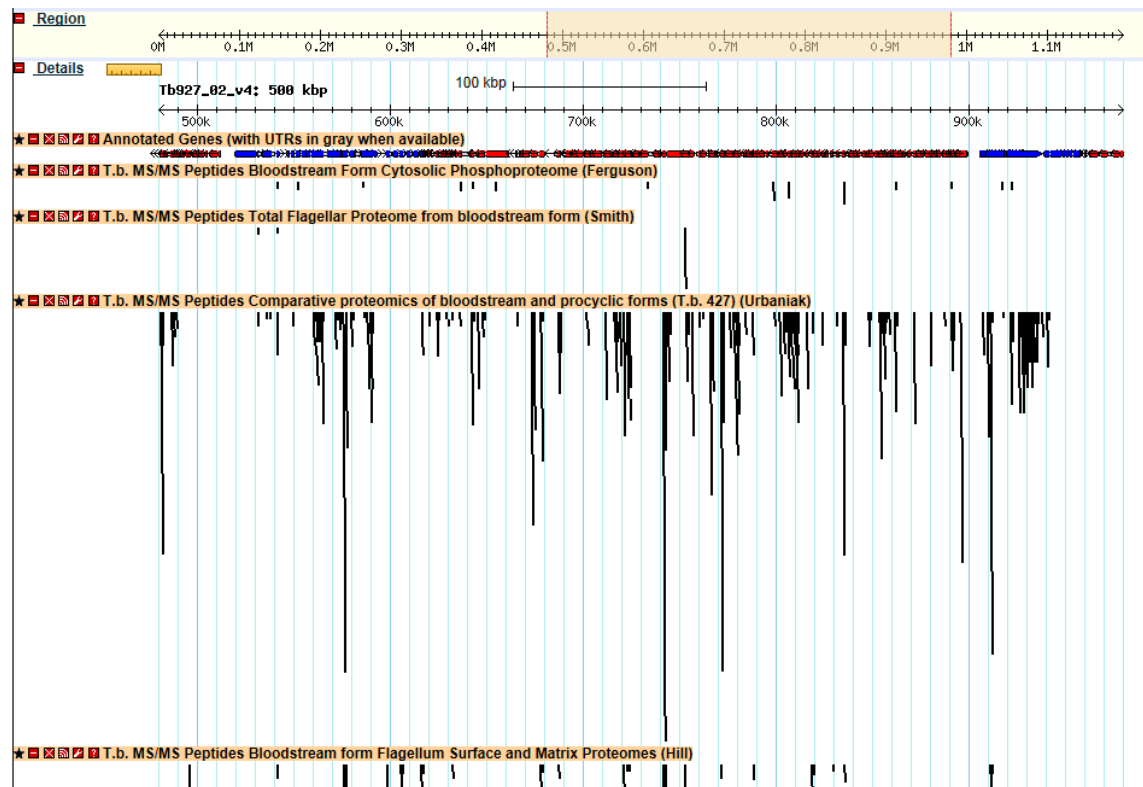
- Now zoom back to 50Kb. Turn off the ChIP-seq tracks and turn on the “T.b. mRNAseq Blood Form and Procyclic Form Coverage (Cross)” track (4 subtracks). Move to the region around 0.6Mbs of the chromosome (you should be on chromosome 2) and turn on all four subtracks. Take note of the blue and grey bars in the coverage plots. What do you think the grey bars indicate?



- Now zoom out to 100Kb – do you see a difference between the blood forms and procyclics?
- Zoom into a gene that looks like it is differentially regulated. What are your conclusions?

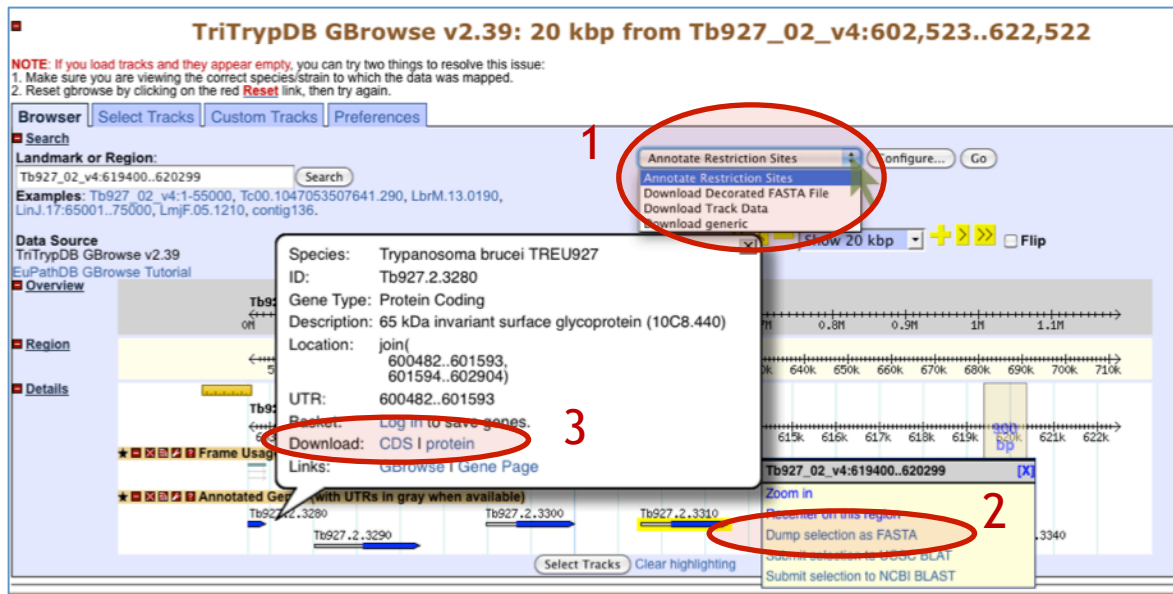


- Can you turn on additional tracks that may give some more support to your conclusions?
Hint: turn on the EST and *T. brucei* protein expression evidence tracks.
 - § Is there any proteomics evidence for this region?
 - § How about EST evidence? Click on an EST graphic (glyph) to get additional information.
- Turn off the RNA-seq graphs and make sure the *T. brucei* protein expression evidence tracks are on. Zoom out to 500Kb. Explore the evidence for gene expression based on mass spec evidence – which gene in this view has the highest number of peptide hits?



2.3 Downloading data from GBrowse and uploading your own tracks to GBrowse

- You can download data from GBrowse in multiple ways and formats.



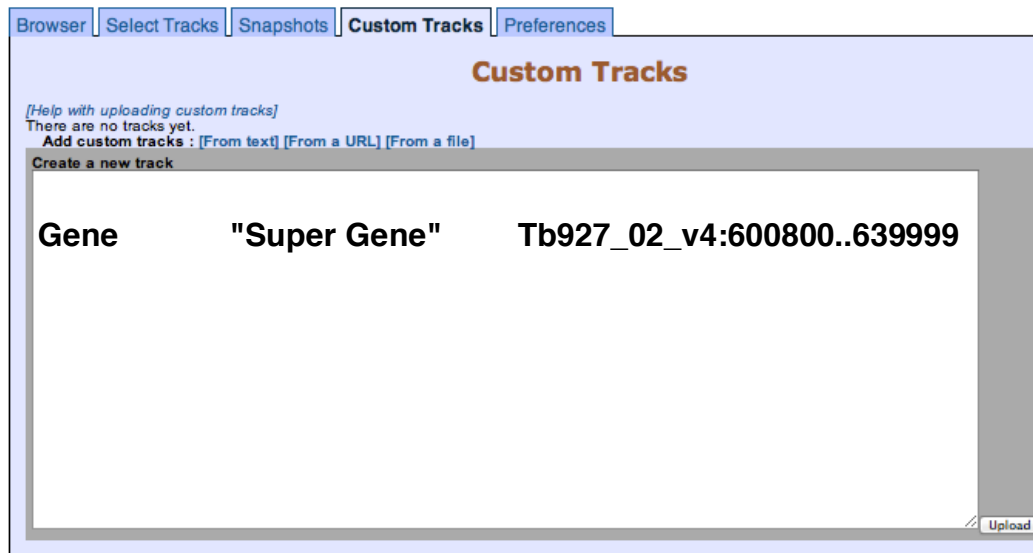
1. The Report and Analysis drop down menu allows you to select a format for the download file that will contain all the features that you have displayed in the region you are looking at.

2. Highlighting a section of the Details scale allows you to retrieve a FASTA dump of the nucleotide sequence from this region. You can also use this same tool to submit a sequence to NCBI Blast.

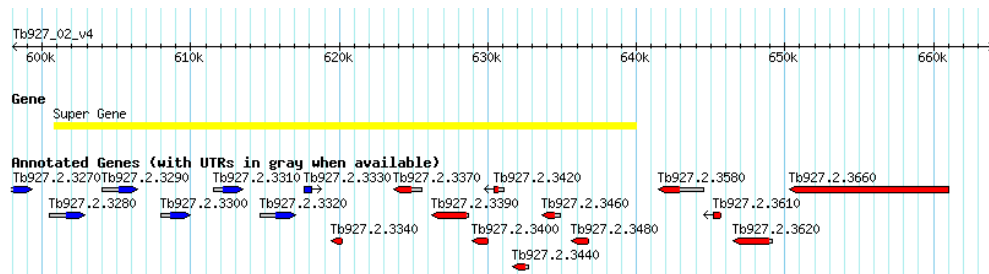
3. Mousing over a gene will reveal a popup window with the option to get the coding (CDS) or amino acid sequence of that gene.

- **Uploading your own tracks is also possible.** One reason to upload your own tracks is if you have data that you would like to display on a chromosome or genomic segment and view it in the context of gene models and other data. To do this you have to follow some rules to ensure that the file you are uploading can be understood by GBrowse. In this exercise we will only go through a couple of simple examples to give you an idea of the possibilities. There are many online resources if you wish.
- Imagine that you have cloned a new gene and you would like to display it in GBrowse. Click on the "Custom Tracks" GBrowse tab and add a custom track "From text".
- There are many types of formats that can be used. For this example we are going to tell GBrowse that we have a gene and a few things about the gene, like its location.

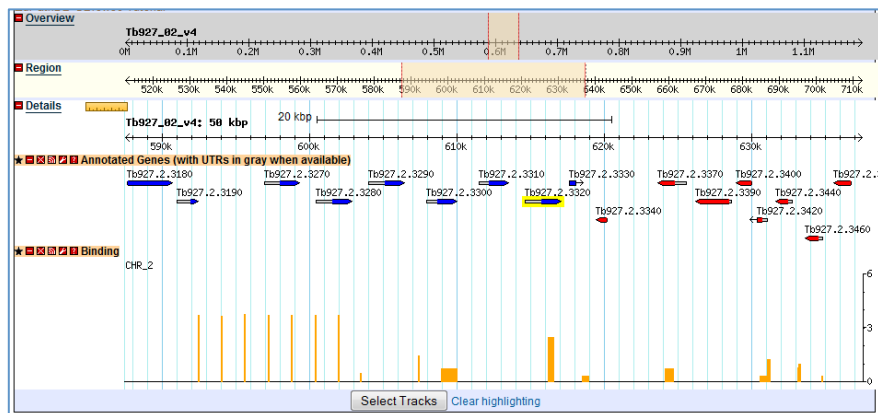
Paste the following into the editor (the next window after you click on Add Custom Tracks From Text), and then click on upload (hint: sometimes you have to zoom in or out a little to see your new glyph):



You should see a new track with your gene displayed



- Now let us load a more complex graphic. For this we are going to use a URL that contains the information we need. In the field “Fetch track file from this URL”, enter the following and click on import (hint: sometimes you have to zoom in or out a little to see your new glyph): <http://goo.gl/igfrO>



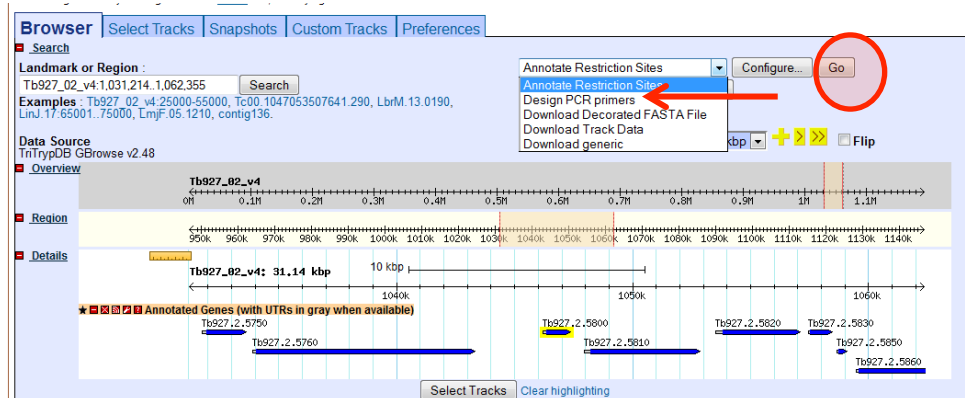
2.4 Designing PCR Primers with GBrowse

Open GBrowse at the genomic location where you want to find primers.

- Go to gene page of gene you want to design primers for and use the 'View in GBrowse' button.
- Open GBrowse from the home page and then enter genomic coordinates in the landmark region.

Choose "Design PCR Primers" from the drop down menu and then click GO.

- This opens the Design Primers application.



Choose a target:

- The graphic is interactive. To choose a target, highlight an area on the scale. You can zoom in with the controls in the upper left corner.
- Once you choose a target, the Product size range is automatically updated in the parameter table at the bottom of the page.
- You can choose to customize the primer design using other parameters.

Click DESIGN PRIMERS to run the application.

